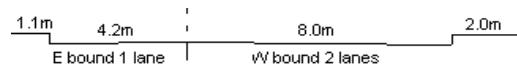
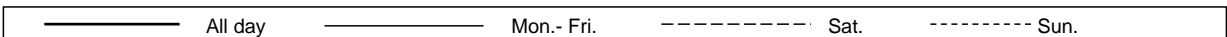
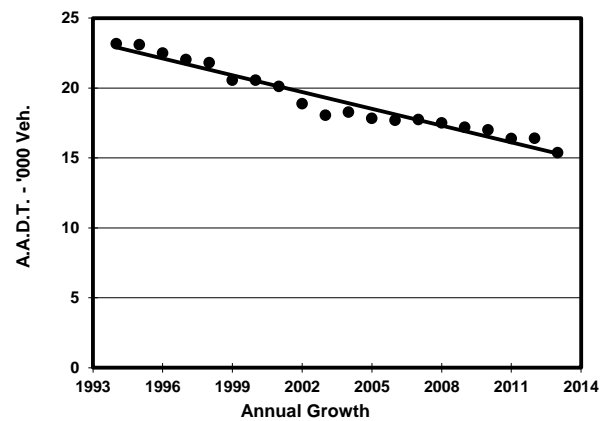
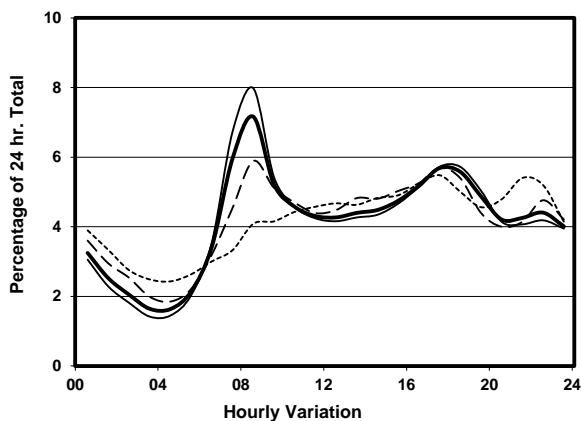
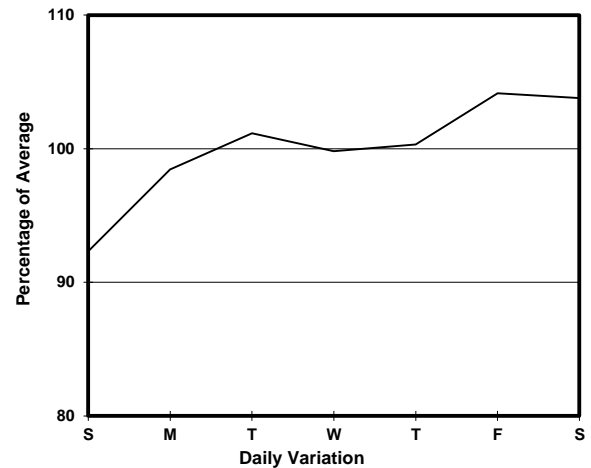
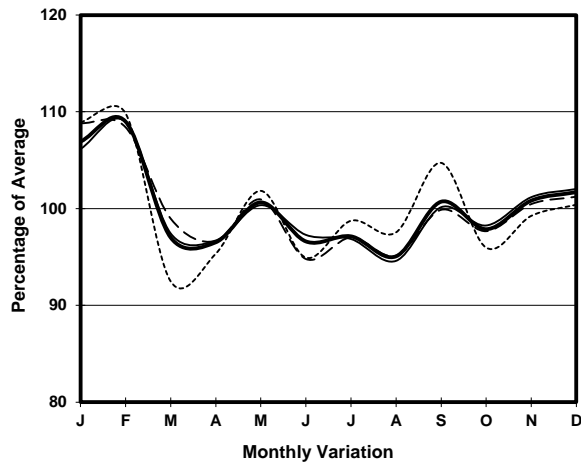


YEAR	2013	LINK	PO LAM RD (from ANDERSON RD to TSUI LAM RD)
CORE STATION	5023		
ROAD NETWORK	MAJOR		
ROAD TYPE	DISTRICT DISTRIBUTOR		



1. TRAFFIC FLOW VARIATION AND GROWTH



2. TRAFFIC CHARACTERISTICS (BY DIRECTION)

Parameter	All - Day	Mon. - Fri.	Sat.	Sun.
EAST BOUND				
A.A.D.T.	7090	7140	7460	6660
R 12 / 24 - %	60.7	61.8	60	55.7
R 16 / 24 - %	80.3	81.2	78.7	76.9
AM Peak Hour	0800-0900	0800-0900	0900-1000	0900-1000
One-way flow at AM peak hour	370	400	360	270
T - % (AM)	-	21.8	-	-
PM Peak Hour	1800-1900	1800-1900	1700-1800	1600-1700
One-way flow at PM peak hour	450	480	460	380
T - % (PM)	-	8	-	-
Prop.of commercial vehicles - 16 hr.	-	18.4	-	-
WEST BOUND				
A.A.D.T.	8280	8410	8550	7610
R 12 / 24 - %	62.3	64.1	60.2	55.1
R 16 / 24 - %	78.5	79.8	76.3	73.9
AM Peak Hour	0800-0900	0800-0900	0800-0900	0900-1000
One-way flow at AM peak hour	730	850	590	330
T - % (AM)	-	7.3	-	-
PM Peak Hour	1700-1800	1700-1800	1700-1800	1700-1800
One-way flow at PM peak hour	440	440	450	410
T - % (PM)	-	11.9	-	-
Prop.of commercial vehicles - 16 hr.	-	13.2	-	-

3. OTHER INFORMATION AND COMMENT

4. Vehicle classification and occupancy - Monday to Friday

Time		Class of vehicle									
		Motor Cycle	Private Car	Taxi	Private LB	PLB	Goods veh.		Non Fr. Bus	Fr. Bus	
							Light	M & H		SD	DD
0700-0800	Pro	8.8	20.7	20.3	1.2	6.8	24.3	6.0	4.4	0.0	7.5
	Ocp	1.1	1.4	1.9	9.7	13.1	1.3	1.2	2.5	0.0	30.9
0800-0900 Peak hour	Pro	6.4	35.9	21.0	2.7	5.2	16.1	4.6	4.0	0.0	4.0
	Ocp	1.1	1.3	1.7	3.6	13.4	1.3	1.2	9.4	0.0	38.3
0900-1000	Pro	4.6	29.5	26.9	2.9	5.1	14.3	10.1	0.8	0.0	5.7
	Ocp	1.0	1.4	1.9	2.3	8.4	1.4	1.1	14.0	0.0	21.9
1000-1100	Pro	4.5	14.5	29.6	4.5	5.6	21.8	12.3	0.6	0.0	6.7
	Ocp	1.1	1.2	1.5	3.9	5.6	1.6	1.2	58.0	0.0	21.6
1100-1200	Pro	4.3	17.2	22.2	3.6	9.3	20.8	12.2	2.2	0.0	8.2
	Ocp	1.0	1.5	1.8	5.0	7.4	1.6	1.4	20.0	0.0	17.1
1200-1300	Pro	1.9	25.0	23.1	4.4	8.8	14.4	8.1	7.5	0.0	6.9
	Ocp	1.0	1.5	1.4	6.0	8.5	1.3	1.1	2.0	0.0	23.6
1300-1400	Pro	3.8	20.3	19.0	2.5	8.3	20.3	13.3	4.4	0.0	7.9
	Ocp	1.2	1.3	1.7	3.3	9.3	1.4	1.2	1.0	0.0	21.7
1400-1500	Pro	1.9	17.5	27.5	0.6	5.0	24.3	14.4	0.6	0.0	8.3
	Ocp	1.0	1.3	1.6	1.0	8.8	1.4	1.2	1.0	0.0	19.5
1500-1600	Pro	1.6	27.6	18.7	6.2	8.3	17.7	9.9	2.6	0.0	7.4
	Ocp	1.0	1.5	1.6	5.1	5.8	1.6	1.3	6.6	0.0	16.5
1600-1700	Pro	3.0	16.1	31.3	4.5	6.6	19.2	9.1	3.5	0.0	6.7
	Ocp	1.0	1.5	1.5	6.7	9.3	1.7	1.2	14.4	0.0	24.9
1700-1800	Pro	6.9	22.2	26.5	2.1	6.9	23.8	2.6	1.6	0.0	7.4
	Ocp	1.1	1.5	1.3	2.5	12.7	1.5	1.2	2.0	0.0	28.4
1800-1900	Pro	9.2	35.7	20.3	0.5	11.1	15.9	0.0	1.5	0.0	5.8
	Ocp	1.1	1.4	1.5	2.0	10.9	1.4	0.0	2.0	0.0	33.0
1900-2000	Pro	7.3	40.8	23.1	0.0	5.9	15.0	0.9	0.5	0.0	6.6
	Ocp	1.2	1.6	1.8	0.0	11.0	1.3	1.5	1.0	0.0	31.7
2000-2100	Pro	5.0	23.6	39.2	0.0	6.8	13.1	4.4	0.0	0.0	7.9
	Ocp	1.1	1.8	1.8	0.0	9.3	1.4	1.0	0.0	0.0	20.6
2100-2200	Pro	9.9	25.4	36.6	0.7	7.7	11.3	0.7	0.0	0.0	7.7
	Ocp	1.1	1.8	1.7	1.0	10.9	1.6	1.0	0.0	0.0	19.0
2200-2300	Pro	9.0	31.1	41.8	0.0	6.2	4.5	0.0	0.0	0.0	7.3
	Ocp	1.2	1.7	1.8	0.0	10.5	1.4	0.0	0.0	0.0	20.1
16 hours	Pro	5.6	26.1	26.1	2.3	6.9	17.4	6.5	2.2	0.0	6.8
	Ocp	1.1	1.5	1.7	4.6	9.9	1.5	1.2	6.9	0.0	24.6

Legend

- Pro.** Proportion of vehicles in % (Sum may not add up to 100% due to figure rounding)
- Ocp.** Average occupancy of vehicles
- M&H** Medium and Heavy